

LEADERSHIP PROFILE



Executive Director (ED)

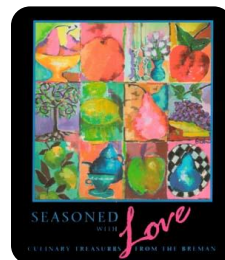
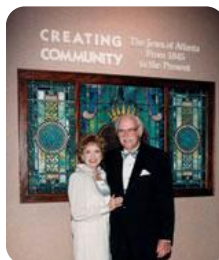
The Breman Jewish Heritage & Holocaust Museum
Atlanta, Georgia

**“Celebrating Jewish culture, embracing diversity,
and promoting social justice.”**

THE ORGANIZATION

The Breman Jewish Heritage and Holocaust Museum is a unique cultural gem in the heart of Atlanta. Dedicated to celebrating and commemorating the Jewish experience and the universal themes of diversity and human dignity, The Breman offers signature exhibitions on the Holocaust and the history of the Atlanta Jewish community, compelling special exhibitions, extensive archives and outstanding educational programs.

Each year, 25,000 students learn the lessons of the Holocaust through tours and programs at The Breman. Among its committed volunteers are 40 Holocaust survivors who share their experiences. With a growing reputation for innovation and excellence, big aspirations for the future and a local Jewish population of 150,000+, The Breman Museum has soaring promise still to be realized.



“building strong foundations for nonprofits”

Having opened in 1996 as part of the Jewish Federation of Greater Atlanta, The Breman became a separate nonprofit in 2002. With an annual budget of \$1.2 million and 1200 members, The Breman continues to co-locate with the Federation.

The Breman strives to promote mutual respect and understanding, and to have an impact on behavior, by collecting, preserving and teaching Jewish values, experiences and culture, and by presenting the complex relationship between minority and majority communities within a culture. The museum teaches the need for every individual to make ethical choices for the benefit of the entire society.

The Breman's many accomplishments include:

- Curating award-winning original exhibitions which have travelled nationally and internationally, reaching huge audiences. These include: *Seeking Justice: The Leo Frank Case Revisited*, *Where the Wild Things Are: Maurice Sendak In His Own Words and Pictures* and *ZAP!POW!BAM! The Golden Age of Comic Books*.
- Creating the South's most robust presentation of the Holocaust, and one of its most significant historical Archives including collections from Alabama and Georgia.
- Inspiring and educating over 200,000 children over the years.

The Breman has a strong, engaged Board of Directors of 46 corporate, community and philanthropic leaders.

Challenges include a relatively low profile, constraints in financial resources, physical location and space, the need to engage more families and young adults, and flat membership.

The museum's founding Executive Director (ED), a gifted curator, artist, historian and leader, has announced plans to retire, prompting this search for the next Executive Director.

For more information, visit www.TheBreman.org.



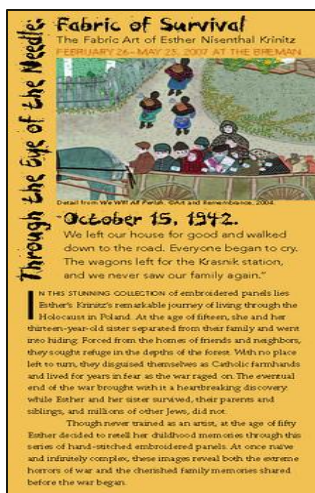
THE OPPORTUNITY

This is a time of promise for The Breman. Building on its positive reputation and programmatic strengths, The Breman seeks to increase its profile and funding. The museum aspires to be a more vibrant, integral part of the community, reaching and engaging a broader constituency within and beyond Georgia. Aspirations for the future include:



- A leading-edge new facility located near other Atlanta attractions
- Compelling experiential and interactive exhibitions
- Greater visibility, presence and “buzz”
- Being a “must-join” museum and convener for the Jewish community
- Being a valued destination and community centerpiece for people of all ages and backgrounds
- Broadening the museum’s appeal and footprint in the Southeast by showcasing the accomplishments of Jewish people throughout the region
- Increased funding – individual and corporate support, a successful capital campaign, diversified revenue streams and an endowment

The new ED has a transformative mandate: to lead The Breman to the next level of success and impact. The Executive Director will bring inspiring vision and leadership, relationship and fundraising skills, collaboration and management acumen. She or he will take The Breman forward, to a new site and next-generation accomplishments. The Executive Director will:



- Lead, inspire and communicate a compelling vision for The Breman’s future.
- Be a strong relationship builder and fundraiser, generating significant new support.
- Brand, market and position The Breman within and beyond the Jewish community.
- Build collaborations and partnerships at the local, national and international level.
- Be a great manager of staff and the business.

THE RELATIONSHIPS

The Executive Director reports to the Board and manages a staff of 12, as well as relationships with volunteers, donors and partners.

Reports to	Board of Directors
Manages the following areas	<ul style="list-style-type: none"> • Marketing and Development • Curatorial • Archives • Education • Finance • Membership • Media Relations/Programming • Visitor Services
Other key relationships include:	<ul style="list-style-type: none"> • Members of the Board of Directors • Board Fundraising Committee • Current and prospective volunteers • Current and prospective donors • Current and prospective partners—local, national and international

THE LOCATION

The Breman is in midtown Atlanta, co-located with the Jewish Federation. Atlanta is the economic capital of the Southeast and one of the most dynamic metropolitan areas in the country. Regularly cited for its livability, the metro Atlanta area is home to over five million residents.

Metro Atlanta assets include the world’s busiest airport, major educational institutions, nationally prominent nonprofit organizations, and more Fortune 500 companies than all but two other U.S. cities.

For more information about Atlanta, go to www.atlanta.net.



THE RESPONSIBILITIES



The Breman Museum ED will be a dynamic, credible leader and builder of thriving organizations. He or she will be knowledgeable and passionate about Jewish history, building audiences and funding. The ED will be comfortable operating at leadership levels in local, regional, national and international contexts. Specifically, the ED will bring:

- **Leadership and vision.** The ED will be a charismatic, inspiring leader with vision and passion for this mission. Working with the Board and staff, she or he will bring to life a compelling vision for The Breman's future as a relevant, thriving and growing entity. The ED will be a credible, energizing communicator of ideas and plans that enlist staff, donors and volunteers to achieve transformative progress.
- **Strong relationship and fundraising skills.** The ED will be uncommonly good at building relationships and support. She or he will have led a capital campaign and raised significant resources. The ED will bring expertise across the spectrum of fundraising and nonprofit revenue streams, including annual, capital, special and earned income.
- **Branding and marketing savvy.** The ED will be capable of positioning and marketing The Breman within and beyond the Jewish community -- attracting all generations including younger audiences. Through traditional, social and new media, interpersonal and online strategies, the ED will elevate The Breman's profile, membership, audiences and support.
- **Build collaborations and partnerships.** The ED will be a natural collaborator with internal and external partners at the local, national and international level. She or he will leverage The Breman's assets and develop productive new partnerships resulting in blockbuster programs, opportunities, audiences and resources.
- **Be a great manager of staff and the business.** The ED will be an experienced team builder, manager and coach who creates an environment of innovation, excellence and passion. He or she will have business acumen, strategic planning, budget and management expertise.



THE CANDIDATE

The ideal candidate is a charismatic leader with a track record of growth and passion for this mission. Knowledge of the world of museums and attractions is desirable. Personal assets will include high energy, authentic self confidence and magnetism.

Assets being sought include:

- Strong emotional intelligence, relationship and fundraising skills.
- Ability to engage, inspire and motivate people, and to drive results.
- Ability to communicate clearly and persuasively in formal and extemporaneous settings, through speaking, writing and storytelling.
- Team-building, coaching and people management skills.
- Ability to solve problems and persevere regardless of obstacles.

Compelling candidates could come from a variety of professional contexts, and will bring significant leadership, experience and success. The Breman is an Equal Opportunity and Affirmative Action employer, and a diverse slate of compelling candidates is being sought.



For potential consideration or to suggest a prospect, please email

Breman@BoardWalkConsulting.com

or call

Kathy Bremer or Kelly Garrison at 404-BoardWalk (404-262-7392).

For the current status of this and other searches, please visit

www.BoardWalkConsulting.com
